



# Large potential in the Kouvola RRT

Mr. Petteri Portaankorva  
Development director – M.Sc.(Tech.) & M.Sc.(Econ. & BA)  
City of Kouvola



# Kouvola RRT belongs to TEN-T core network corridor



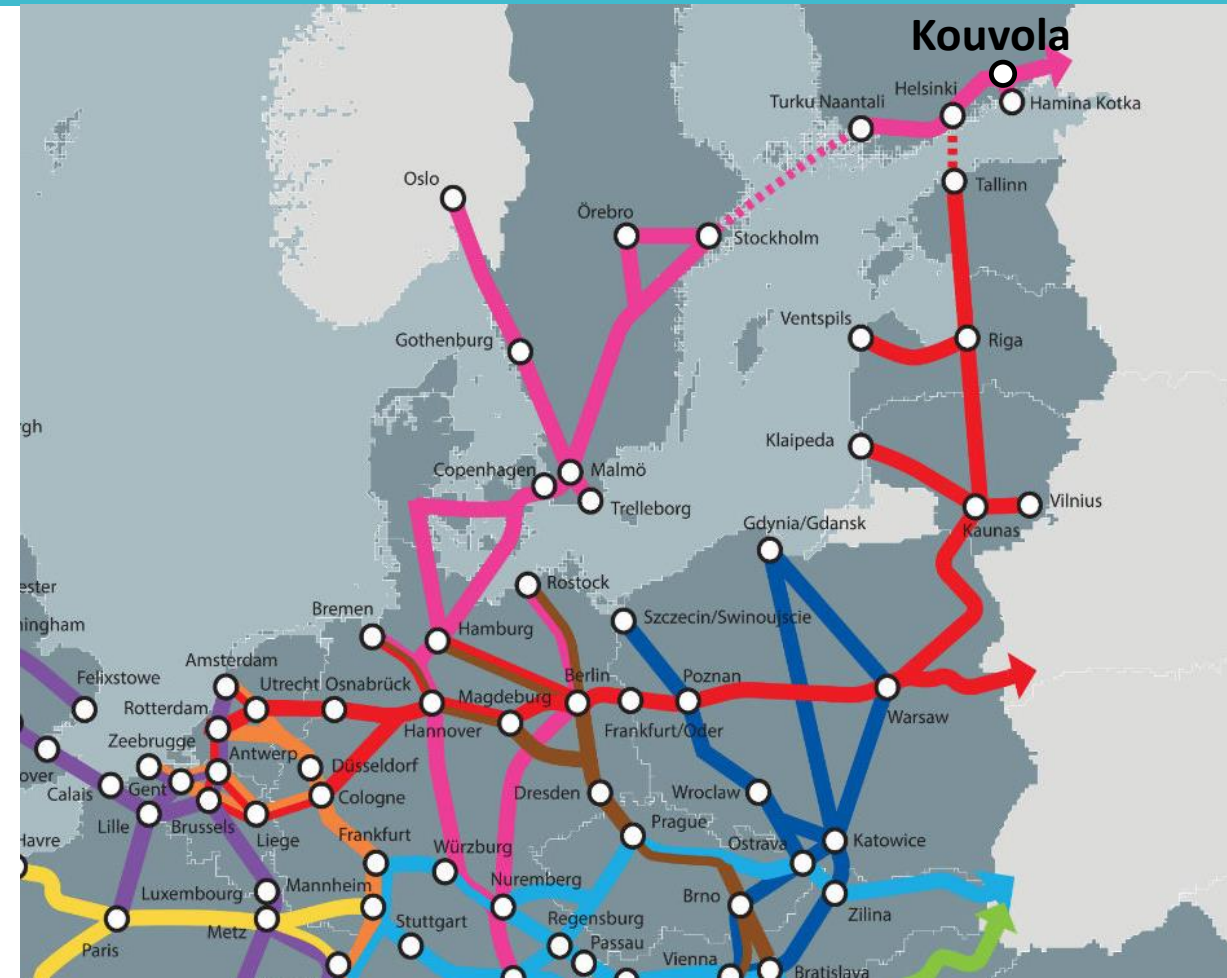
- The only Finnish rail-road terminal of the European core transport network
- An international logistics centre
- The largest railway logistics centre and the largest marshalling yard in Finland
- The new intermodal terminal will strengthen Kouvola's position in logistics

# Transport corridors in Northern Europe

## Trans-European Transport Network TEN-T

The goal of the TEN-T network is a **safe and sustainable EU transport system** that promotes the seamless movement of goods and people.

The TEN-T core network focuses on the **most important connections and hubs**.





# TEN-T is an advantage

- TEN-T network **connects the EU member states** to each other
- Includes **all transport modes**
- Sets **goals** for the network **infrastructure**
- **Two level** multimodal transport network
  - **Core network** by 2030
  - **Comprehensive network** by 2050
- The **European Commission funds the** development of the TEN-T network
- The financing has focused very much on the development of the **nine core network corridors**



# Kouvola is a part of TEN-T Core Network



Co-financed by the European Union  
Connecting Europe Facility

TEN-T core network:

- Road (approx. 400 km)
- Railway (approx. 580 km)



Harbour

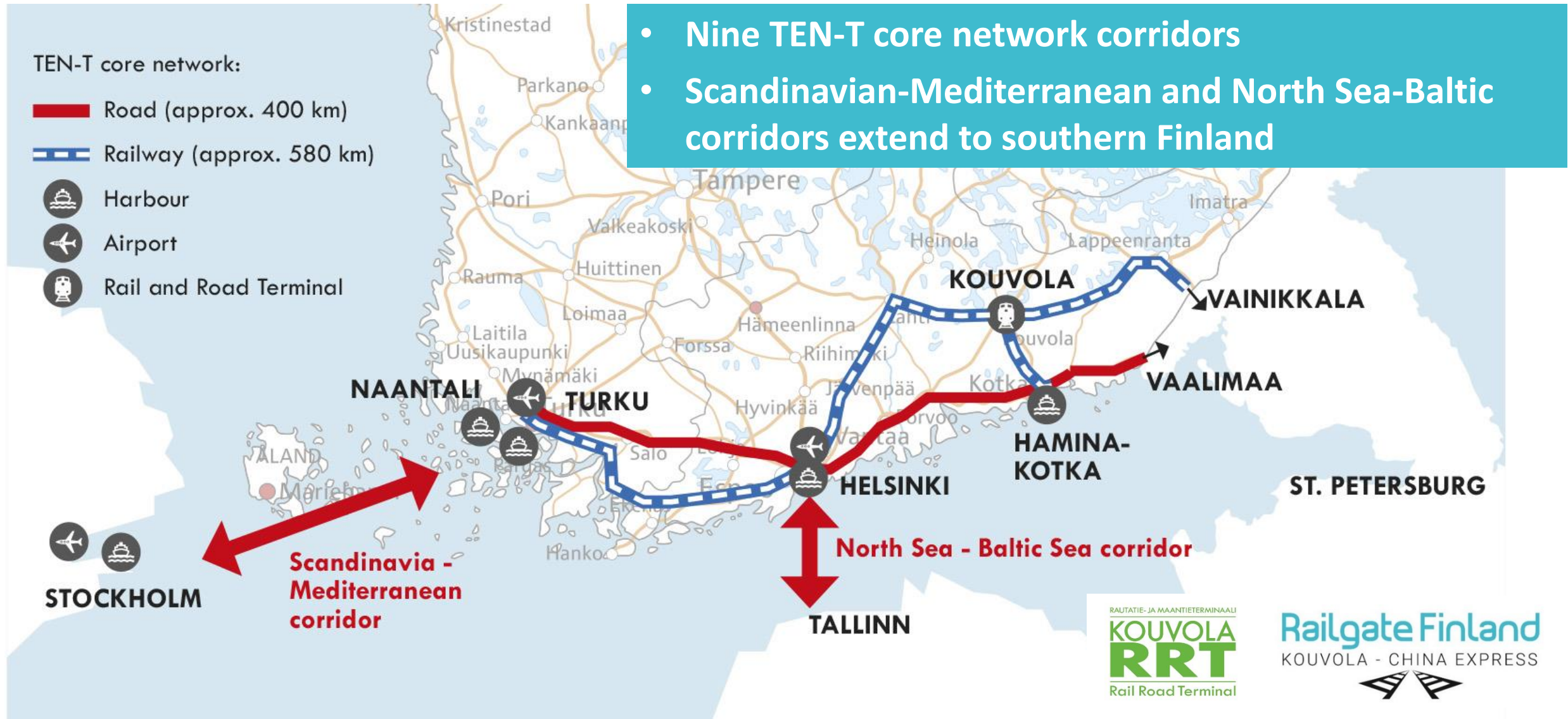


Airport



Rail and Road Terminal

- Nine TEN-T core network corridors
- Scandinavian-Mediterranean and North Sea-Baltic corridors extend to southern Finland





# Strong in logistics

The City of Kouvola continues to invest in the logistics centre  
- focusing on railway logistics development



# Kouvola's strengths:

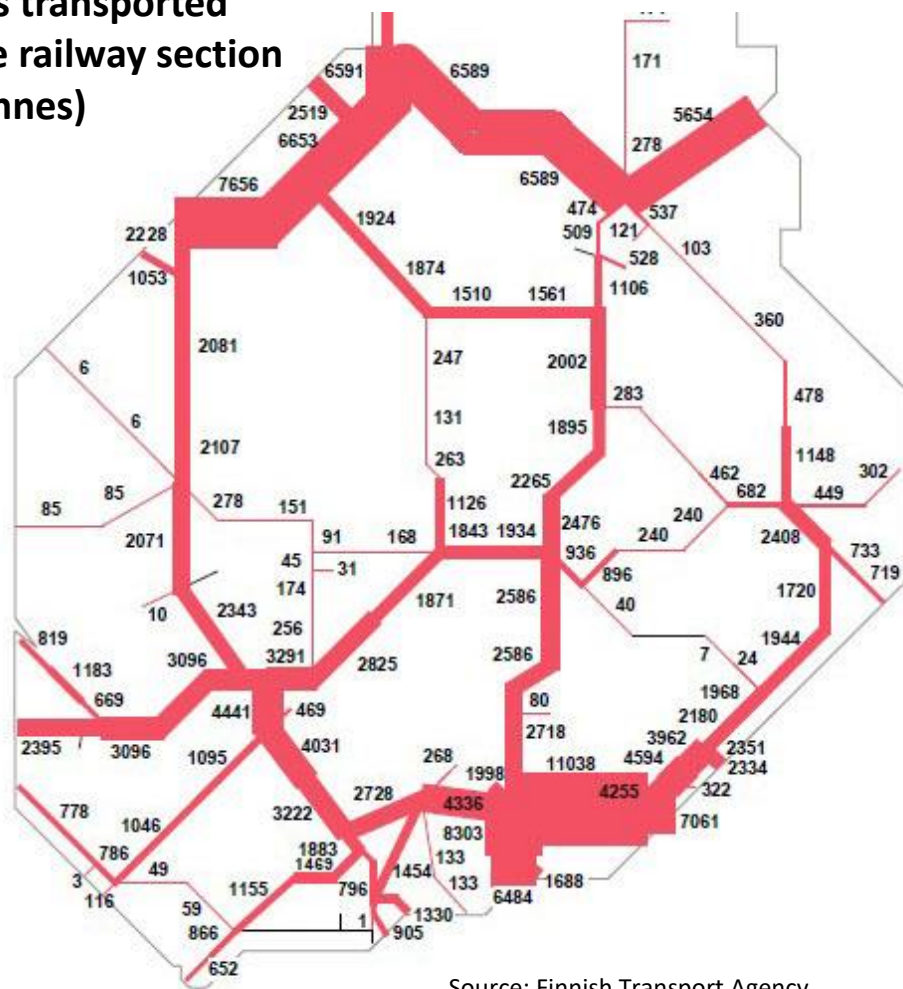
## Railway and central location



- **Railway connections to all directions**
- **Main road connections to six directions**
- **Passenger transport and freight transport hub**
- **A main freight transport artery**
- **A gateway between Europe and Asia**

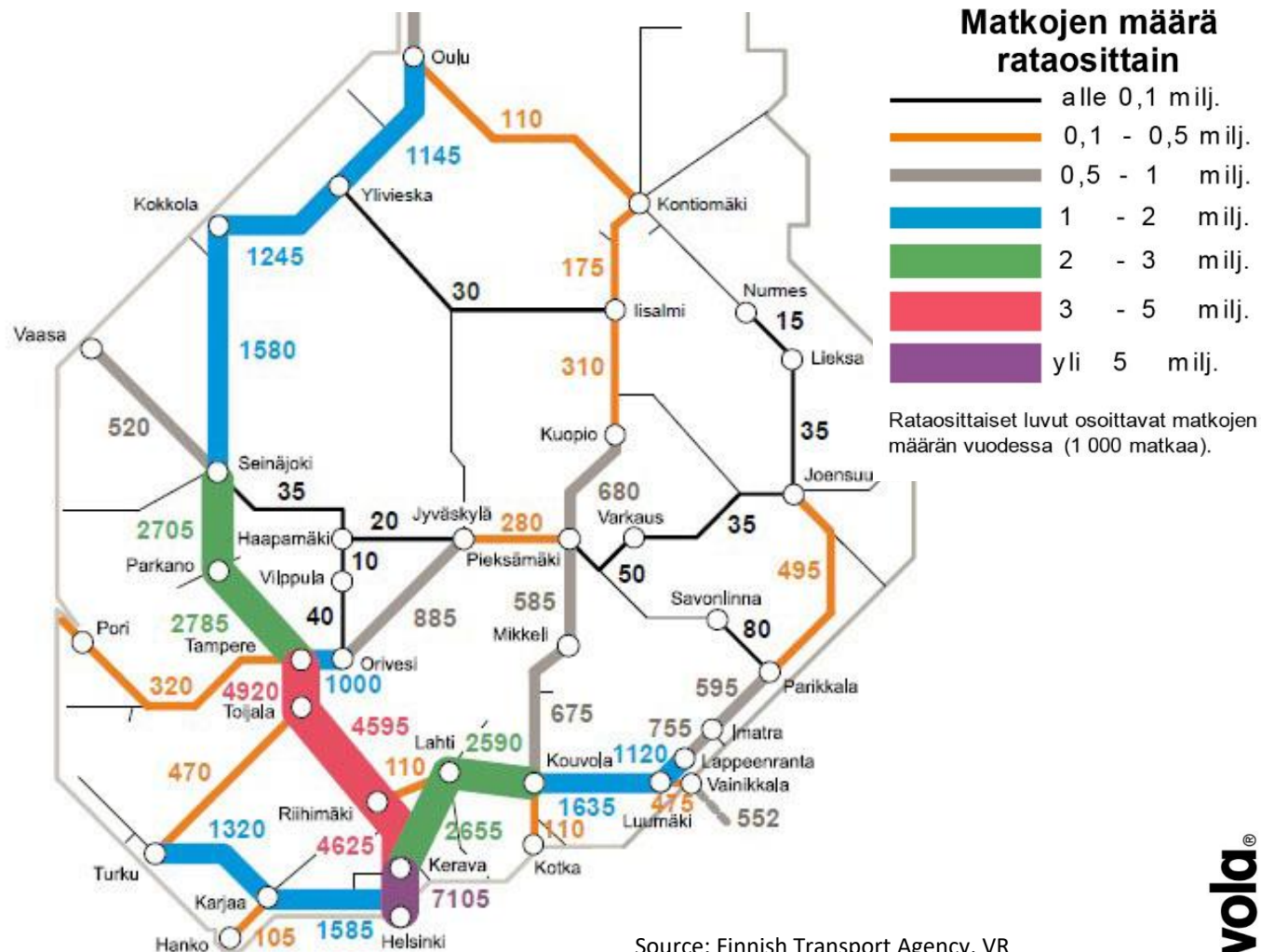
# Main freight transport artery – passenger transport hub

Net loads transported  
along the railway section  
(1000 tonnes)



Source: Finnish Transport Agency  
Goods traffic transportation flows in 2017

22.5.2019 HL



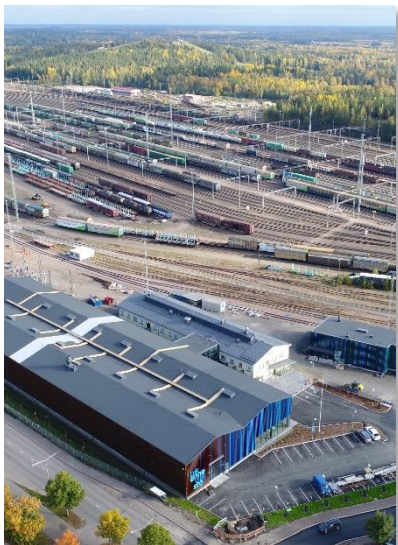
Source: Finnish Transport Agency, VR  
Long distance passenger flows in 2018



# Kouvola®

## Strong in logistics

Versatile education and research units in the logistics and railway logistics sector



The best logistics centre in Northern Europe 2015



RAUTATIE- JA MAANTIETERMINAALI  
**KOUVOLA RRT**  
Rail Road Terminal



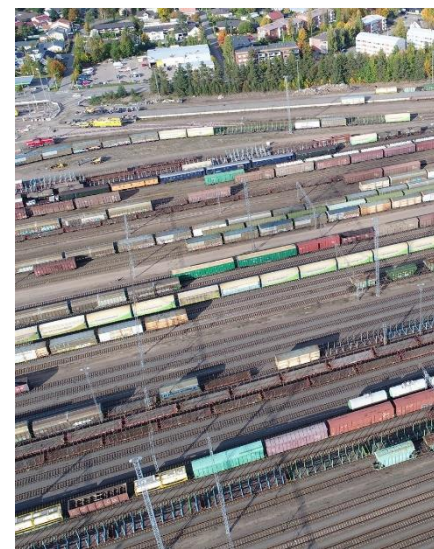
Finrail Oy  
Rail traffic  
management centre



Railgate Finland  
KOUVOLA - CHINA EXPRESS



Container train connection to China



The largest railway logistics centre in Finland



# An international logistics centre



- Around **100 logistics companies** operate in the Tehola-Kullasvaara logistics area; **nearly 200 in the entire Kouvola region**
- The logistics sector has nearly **2000 employees**
- A study of European logistics centres in 2015: Kouvola is **the leader in the Nordic and Baltic countries** and 32th in the whole of Europe  
(The study covered 300 logistics centres in 30 European countries)





RAUTATIE- JA MAANTIETERMINAALI  
**KOUVOLA  
RRT**  
Rail Road Terminal



Co-financed by the European Union  
Connecting Europe Facility

# Rail-Road Terminal Kouvola RRT



# A modern intermodal terminal to Kullasvaara



Kouvola RRT is the **only** Rail-Road Terminal of the TEN-T core network in Finland

In terms of international significance, the terminal can be compared to the main ports and airports in Finland

The new terminal will **improve the efficiency** of the logistics operations

The aim is to enhance the **competitiveness** of Finnish logistics





# The terminal meets EU requirements



The EU goal is to provide equal access for all operators to use loading tracks and terminal facilities in the area

**Intermodal transport** – containers, trucks and swap bodies

**Open Access** for all operators

ICT-systems – **Smart solutions** for logistics and storage

**Electrified access**

**Train length** 1100 m as a single unit

Container train connection between Kouvola RRT and Asia



# The intermodal terminal is under construction



The **construction** of the intermodal terminal begun in 2019

The RRT area is **in total 170 hectares**  
The Intermodal terminal area **for extra-long trains is 48 hectares**

**Total investment 41,6 million Euros:**  
28,2 M€ (68 %) City of Kouvola  
9,0 M€ (22 %) European Commission  
4,4 M€ (10 %) Finnish Transport  
Infrastructure Agency

**Kouvola®**

RAUTATIE- JA MAANTIETERMINAALI  
**KOUVOLA  
RRT**  
Rail Road Terminal



Co-financed by the European Union  
Connecting Europe Facility



# The project is implemented in phases

## Area 1 under construction:

Intermodal terminal for extra-long freight trains (1100 m)

Will be taken in use in **2022**

## Area 2:

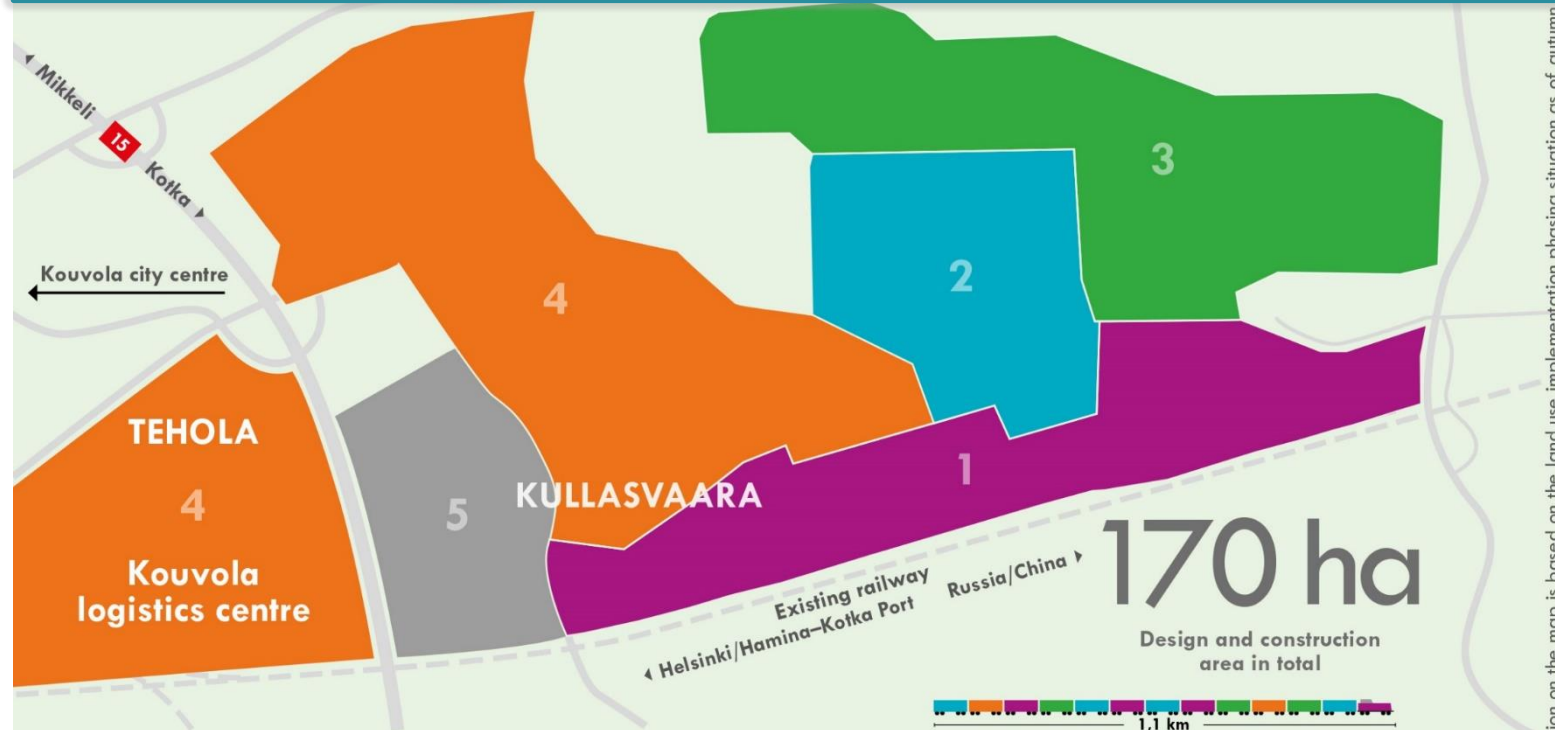
Detailed plan of the logistics area

## Area 3:

Master plan for the business area

## Area 4:

Development of the logistics and business areas



### THE DESIGN AND CONSTRUCTION OF THE KOUVOLA RAIL ROAD TERMINAL (RRT) WILL HAPPEN IN PHASES:

#### 1 Intermodal terminal for long trains

- Estimated start of operations: 2022-2023
- Start of construction: 2019

#### 2 Logistics area

- Estimated start of operations: 2023
- Estimated start of construction will be announced later.

#### 3 Business area

- Estimated start of design and construction will be announced later.

#### 4 Logistics and business area

- Partially built area. Will be fully built up later.

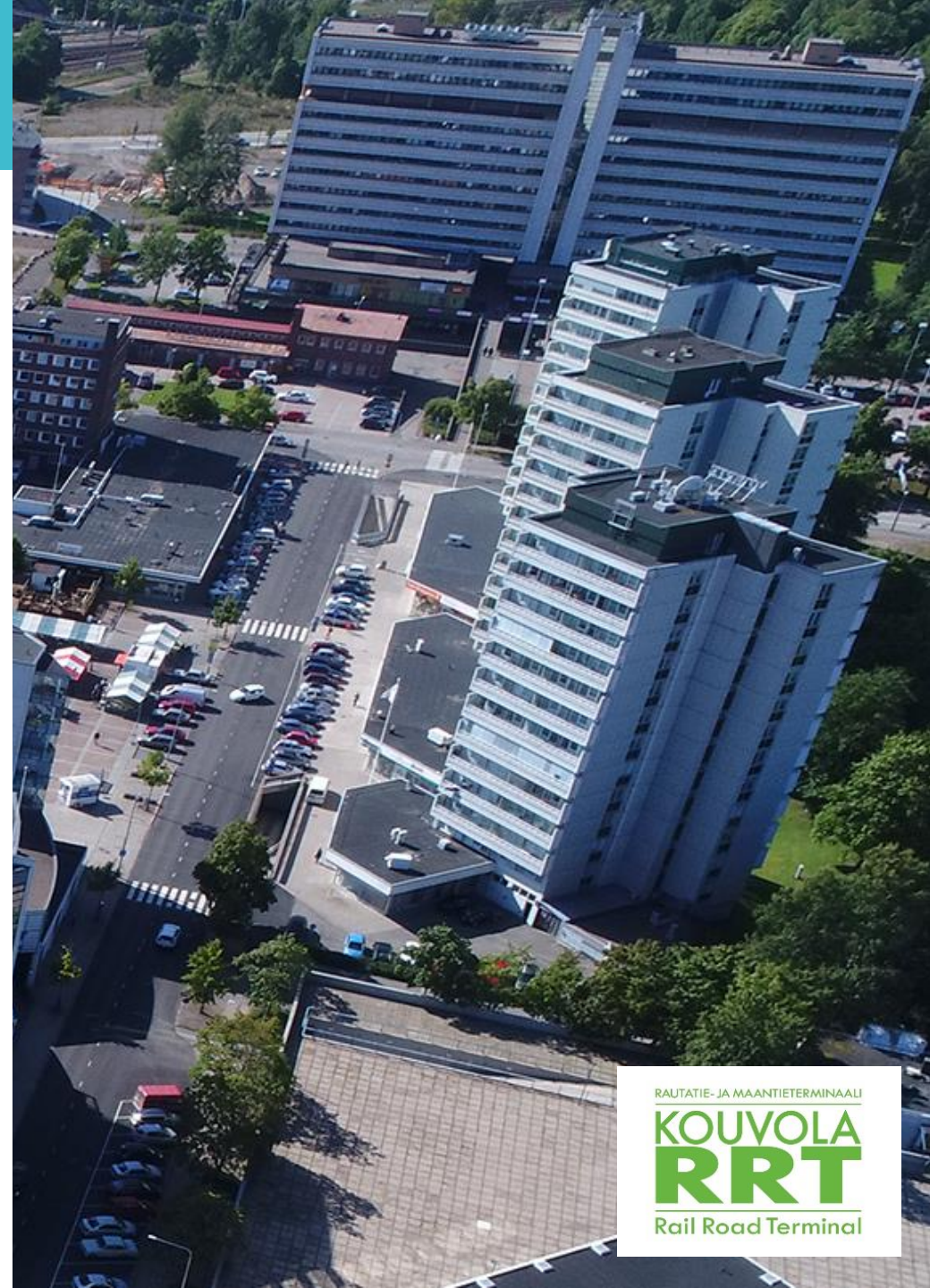
#### 5 Additional reserved areas

- Estimated start of design and construction will be announced later.



# Kouvola RRT generates vitality

- **Generates new business opportunities** during terminal construction and operating
- Increases **financial growth** and improves **employment**
- Creates **new logistics services** and introduces **new innovations**
- **Promotes access** for local companies to the logistics market
- Strengthens Kouvola's role in railway education
- The modal shift from road transport to rail transport will **benefit the environment**

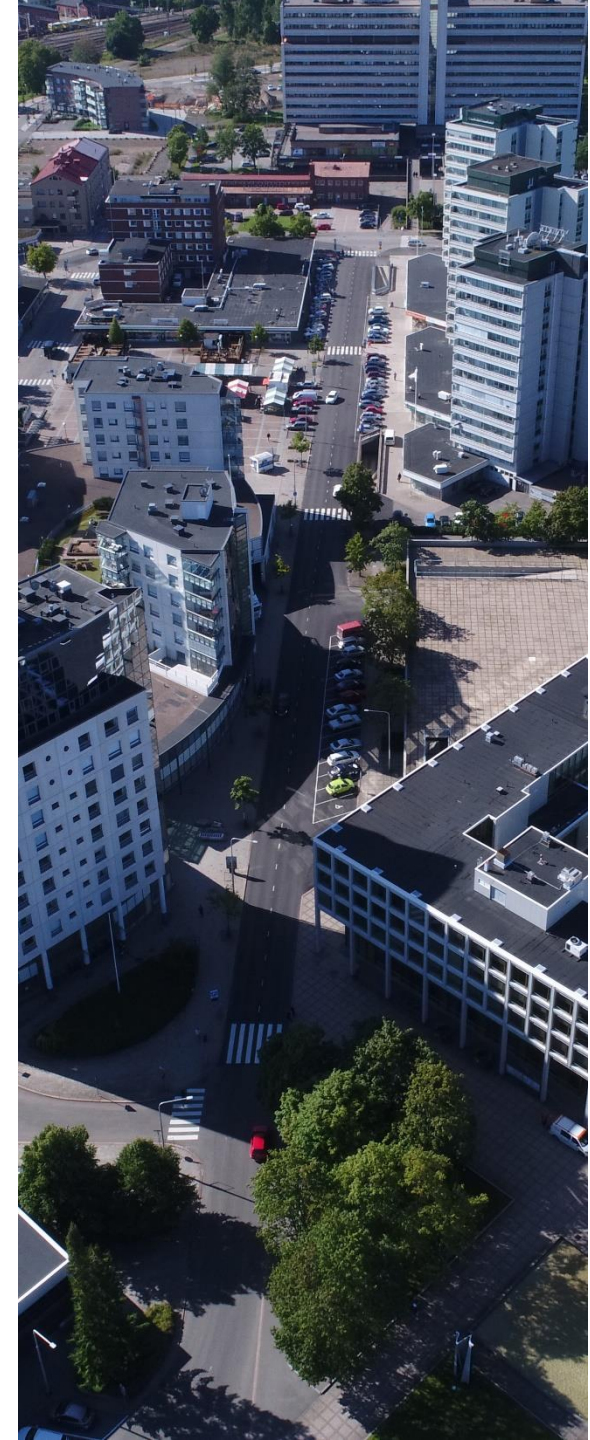




URBAN CITY STRATEGY 2019–2030

# KOUVOLA

## ON A GROWTH TRACK





An aerial photograph of Kouvola, Finland, showing a mix of urban development and greenery. In the foreground, there's a large railway yard with numerous tracks and some parked trains. To the left, there are several multi-story apartment buildings and commercial structures. The city is surrounded by dense forests, and the background shows a clear blue sky.

**For further information, please contact:**

Development Director Petteri Portaankorva, City of Kouvola  
p. +358 20 615 1287, [petteri.portaankorva@kouvola.fi](mailto:petteri.portaankorva@kouvola.fi)