



PUU-BO

EXECUTIVE SUMMARY

When asked to design a building system for the housing market in Finland and its major export countries, the point of direction was to design an Innovative system, that can fit in any built environment for any type of use. Rather than developing a system based on market studies or dubious forecasts, we wanted to make a system so flexible it can embrace as many building typologies and functionalities as possible. At the same time the system should be sustainable both in its construction and consumption, while being competitive with existing building systems, mainly of concrete elements.

We propose a roadmap for wooden construction to reach the same efficiency as today's concrete elements without repeating the mistakes of the concrete industry.

Instead of making the most carbon neutral system from the beginning we develop a system that evolves over time. This way the system respects the ever increasing key drivers for sustainability while being competitive with other building systems. The system is applicable to any functional needs, -markets, -building codes, and energy demands. The main load bearing parts are 100% wood; all other parts are made from wood when possible and implemented when the given technology is available and affordable.

We propose a roadmap for wooden construction to reach the same efficiency as today's concrete elements without repeating the mistakes of the concrete industry.

WHAT'S PUU-BO?

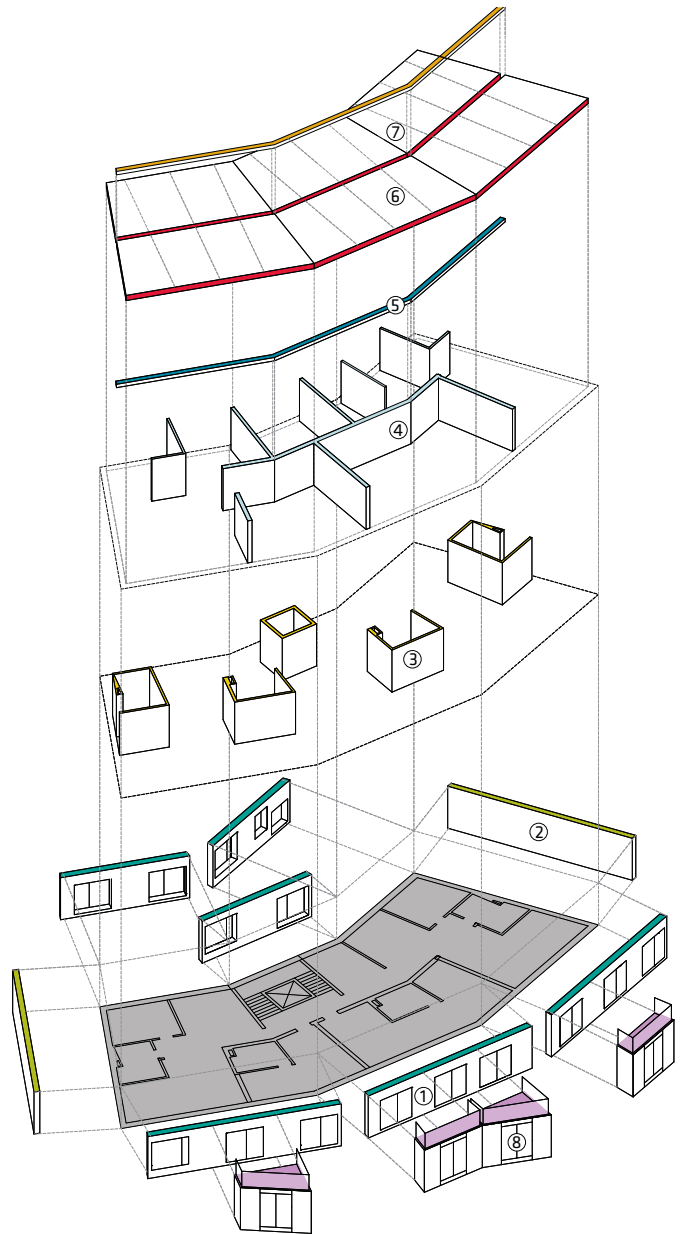
PUU-BO is a comprehensive prefab solution that is both more flexible and materially efficient than anything else on the market today. As a system that is based not on predefined, standard elements but best practices, it is built for evolution. PUU-BO is engineered to be adaptable across a range of typologies and building uses - the very same elements in our residential demonstration project could be used in a wood skyscraper with no loss in material efficiency! Only the columns and shear walls would need to be adjusted. Consequently, the structural system is very open and flexible and can accommodate anything from small housing to open office plans.

WHAT'S THE INVESTMENT?

To start now, -nothing. PUU-BO is ready to go today with available resources in the Finnish market, but is part of a larger framework for evolution to make it even better tomorrow. We use the right materials for today, based on performance and not dogma.

WHAT'S THE RETURN?

PUU-BO's conception as a system based on best practices gives it an embodied intelligence and ensures its viability for the future. Its easy adaptability to a variety of building typologies and uses opens up new possibilities today for prefabricated wood systems beyond the residential market. New products, solutions, and businesses will naturally result.

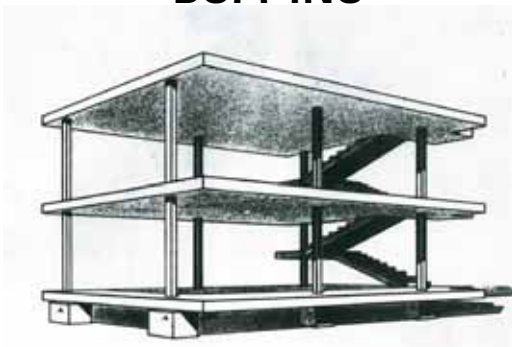


FROM CONCRETE TO WOOD

Corbusier DOMI-NO system was developed to industrialize construction with the new technologies of concrete structures, and bring qualitative space to the masses.

Today our society is facing different challenges calling for new solutions. Our PUU-BO building system aim to change the construction industry, to build new sustainable structures of wood. We address the growing demand for energy efficient, low carbon structures with an ever evolving building system that is both competitive and innovative.

DOM-INO



PUU-BO

